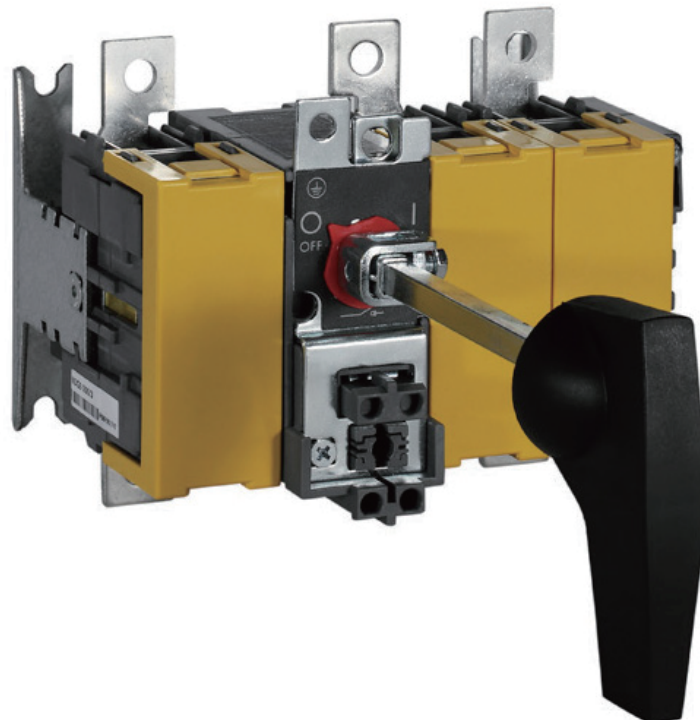




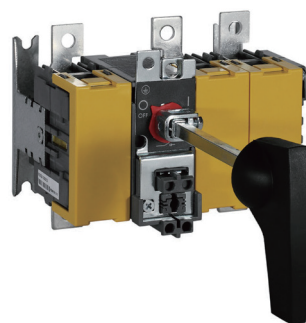
## DS2 Series Disconnecting Switch



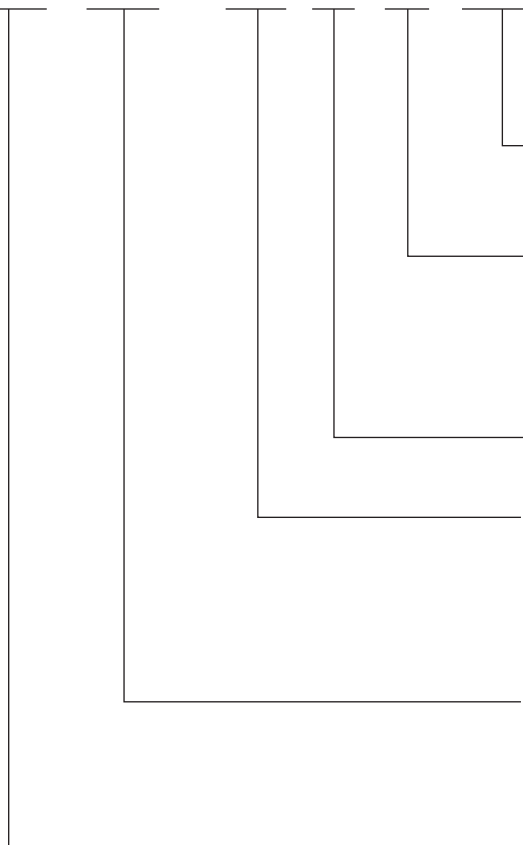
note: subject to change without any notice, JDA pay no responsibility



## Quick Selection Table of DS(F)2 Series Disconnecting Switch



JDA DS2 - 125 / 3 / A1 125A



Rated current of the adapted fuse link, applicable to the disconnecting switch fuse group.

Form of the auxiliary switch:

A1-With one auxiliary switch (one NO, one NC)

A2-With two auxiliary switches (two NO, two NC)

No code-Without auxiliary switch

Number of poles: 3-3P 4-4P

Specifications:

For disconnecting switch: 125, 160, 200, 400, 630, 1000, 1250, 1600

For disconnecting switch fuse group: 63, 125, 160, 250, 400, 630, 800, 1000, 1250

Model:

S2-Disconnecting switch

SF2-Disconnecting switch fuse group

Enterprise code: JDA

Note:

4 poles are not available for the disconnecting switch 1250 and 1600 as well as the disconnecting switch fuse 1000 and 1250.



## Main Performance Parameters of DS2 Series Disconnecting Switch

Specifications	JDA-DS2 -125	JDA-DS2 -160	JDA-DS2 -200	JDA-DS2 -400	JDA-DS2 -630	JDA-DS2 -1000	JDA-DS2 -1250	JDA-DS2 -1600
Number of poles	3, 4	3, 4	3, 4	3, 4	3, 4	3, 4	3	3
Rated insulation voltage $U_i$ (V)	1000	1000	1000	1000	1000	1000	1000	1000
Rated impulse withstand voltage $U_{imp}$ (kV)	12	12	12	12	12	12	12	12
Rated working voltage $U_eV$								
AC 50Hz	400/690	400/690	400/690	400/690	400/690	400/690	400/690	400/690
DC	500	500	500	500	500	1000		
Rated operational current $I_e$ (A)/ power AC								
400V AC-23B A/kW	125/75	160/90	200/110	400/200	630/355	1000/500	1250/515	1600/660
690V AC-23B A/kW	125/110	160/150	160/150	250/375	400/375	800/710	1000/890	1250/1110
Rated operational current $I_e$ (A)/ DC								
500V L/R=15ms DC-23B (A)				400	630			
1000V L/R=2.5ms DC-22B (A)						500		
Rated short-circuit making capacity AC 690V kA	20	20	20	50	50	85	85	85
Rated short-time withstand current AC 690V kA/1s	4	4	4	15	15	50	50	50
Rated short-circuit making capacity DC 500V kA	20	20	20	50	50			
Rated short-time withstand current DC 500V kA/1s	4	4	4	15	15			
Rated short-circuit making capacity DC 1000V kA						50		
Rated short-time withstand current DC 1000V kA/1s						15		



Specifications	JDA-DS2 -125	JDA-DS2 -160	JDA-DS2 -200	JDA-DS2 -400	JDA-DS2 -630	JDA-DS2 -1000	JDA-DS2 -1250	JDA-DS2 -1600
<b>Rated making and breaking capacity</b>								
Rated making capacity 690V AC-23B (A)	1250	1600	1600	4000	4000	8000	12500	12500
Rated breaking capacity 690V AC-23B (A)	1000	1280	1280	3200	3200	6400	10000	10000
Rated making and breaking resistive load capacity 400V (kVAr)	131	131	131	251	251	540	820	820
<b>Mechanical capacities</b>								
Mechanical life (times)	15000	15000	12000	3000	3000	3000	1000	1000
Electrical life (times)	1000	1000	1000	300	300	150	100	100
Operating torque Nm	7.5	7.5	7.5	16	16	30	38	38
<b>Permissible load</b>								
Ambient temperature: 40°C, A	125	160	200	400	630	1000	1250	1600
Ambient temperature: 45°C, A	125	150	180	395	600	960	1220	1550
Ambient temperature: 50°C, A	125	145	160	390	570	920	1180	1500
Ambient temperature: 55°C, A	125	140	140	380	540	880	1140	1445
<b>Connection</b>								
Minimum cross-sectional area of the copper cable mm <sup>2</sup>	70	120	150	240	2x150	2x240	-	-
Maximum cross-sectional area of the copper cable mm <sup>2</sup>	20x5	40x16	40x16	40x16	40x16	40x16	70x14	70x14
Maximum copper cable density mm	20	20	20	25	25	40	70	70
Terminal tightening torque Nm	7-10	15-22	15-22	35-45	35-45	35-45	50-65	50-65
<b>Others</b>								
Neutral pole current A/A	125/125	160/160	200/200	400/400	630/630	630/630	1000/1000	1000/1000
Auxiliary switch 380V AC-15 A	4	4	4	4	6	6	6	6
Auxiliary switch 220V DC-13A	0.4	0.4	0.4	0.4	0.6	0.6	0.6	0.6





## Main Performance Parameters of DSF2 Series Disconnecting Switch

Specifications	JDA-DSF2 -63	JDA-DSF2 -125	JDA-DSF2 -160	JDA-DSF2 -250	JDA-DSF2 -400	JDA-DSF2 -630	JDA-DSF2 -800	JDA-DSF2 -1000	JDA-DSF2 -1250
Number of poles	3, 4	3, 4	3, 4	3, 4	3, 4	3, 4	3, 4	3	3
Size of the adapted fuse link	000	00	00	1-2	1-2	3	3	4	4
Biggest fuse	100	160	160	400	400	800	800	1250	1250
Rated insulation voltage Ui (V)	1000	1000	1000	1000	1000	1000	1000	1000	1000
Rated impulse withstand voltage Uimp (kV)	12	12	12	12	12	12	12	12	12
Rated working voltage Ue V									
AC 50Hz	380	380	380/690	380/690	380/690	400/415/690	400/415/690	400/415/690	400/415/690
Rated operational current Ie									
400V AC-23B A/kW	60/30*	125/75	160/90	250/132	400/200	630/333	800/425	1000/515	1250/660
690V AC-23B A/kW	60/55*	125/110	160/150	250/220	400/375	630/560	800/710	1000/910	1250/1110
Rated ultimate short-circuit current kA									
AV 380V	100	100	100	100	100	100	100	100	100
AV 690V			50	50	50	50	50	50	50
DC 500V						50	50	50	50
Rated making and breaking capacity									
Rated making capacity 690V AC-23B (A)	630*	1250	1600	2500	4000	6300	8000	10000	12500
Rated breaking capacity 690V AC-23B (A)	504*	1000	1280	2000	3200	5040	6040	8000	10000
Rated making and breaking resistive load capacity 400V (kVA <sub>r</sub> )	131	131	251	251	251	540	540	830	830
Mechanical capacities									
Mechanical life (times)	15000	15000	12000	12000	12000	3000	3000	1000	1000
Electrical life (times)	1000	1000	300	300	300	200	150	100	100
Minimum operating torque (Nm)	7.5	7.5	16	16	16	30	30	38	38



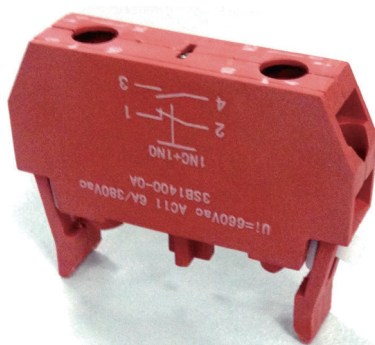
Specifications	JDA-DSF2 -63	JDA-DSF2 -125	JDA-DSF2 -160	JDA-DSF2 -250	JDA-DSF2 -400	JDA-DSF2 -630	JDA-DSF2 -800	JDA-DSF2 -1000	JDA-DSF2 -1250
Permissible load									
Ambient temperature: 40°C, A	63	125	160	250	400	630	800	1000	1250
Ambient temperature: 45°C, A	63	125	150	250	380	610	770	970	1200
Ambient temperature: 50°C, A	63	125	145	250	360	590	740	940	1150
Ambient temperature: 55°C, A	63	125	140	240	340	570	710	910	1100
Connection									
Minimum cross-sectional area of the copper cable mm <sup>2</sup>	35	70	120	150	240	2x150	2x240	2x240	-
Maximum cross-sectional area of the copper cable mm <sup>2</sup>	20x5	20x5	40x16	40x16	40x16	40x16	70x14	70x14	70x14
Maximum copper cable width mm	20	20	20	25	25	40	40	70	70
Terminal tightening torque Nm	7-10	7-10	15-22	15-22	35-45	35-45	35-45	35-45	35-45
Others									
Neutral pole current A/A	63/63	125/125	160/160	250/250	400/400	630/630	800/800	1000/1000	1250/1000
Auxiliary switch 380V AC-15A	4	4	4	4	4	6	6	6	6
Auxiliary switch 220V DC-13A	0.4	0.4	0.4	0.4	0.4	0.6	0.6	0.6	0.6



## Accessory Selection Table of DS(F)2 Series Disconnecting Switch

- ◆ Type H handle (operation handle outside a cabinet, to be used with Type H spindle and coupling)
- ◆ Type H spindle (shaft length of L, L1, L2, to be used with Type H handle and coupling)
- ◆ coupling (to be used with Type H handle and spindle)
- ◆ Type B handle (operation handle outside a cabinet, to be used with Type B spindle)
- ◆ Type B spindle (shaft length of L, L1, L2, to be used with Type B handle)
- ◆ Inside-cabinet handle (handle and spindle installed, with the shaft length of L, L1, L2)
- ◆ Protective cover (applicable to DS2-125~1000 products, 3 covers are needed for each product)
- ◆ Auxiliary switch (1 or 2 switches can be used for a product, F1 for 1 and F2 for 2)
- ◆ Fuse link (applicable to DSF2, 3 are needed for a product)
- ◆ Flash barrier (applicable to DSF2. 5 pieces to be used for a product in DSF2-63~400, 4 pieces to be used for a product in DSF2-630~1250)
- ◆ Shaft sleeve

Note: For the inside-cabinet operation of DSF2-125~630 products, the auxiliary switch can't be installed due to too low installation depth.



Auxiliary switch




Protective cover




日煬國際事業股份有限公司  
JD Auspice Co., Ltd.



 [www.jdauspice.com](http://www.jdauspice.com)



 [@jdauspice](https://www.facebook.com/jdauspice)



 ID : @jdapv

